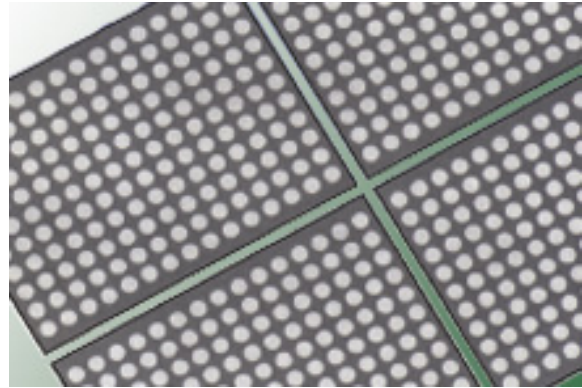




PRODUCTS FOR OUR ENVIRONMENT

**TECHNICAL DATA SHEET**

**ERS-EPDM/TPO Walkpads**



For Professional Use Only

**PRODUCT DESCRIPTION:**

The ERS-EPDM/TPO Walkpads are designed to protect the membrane in those areas exposed to repetitive foot traffic.

**USES:**

Ecology Roof Systems' specifications require the use of walkways in the following areas:

1. Walkways must be installed at all traffic concentration points (i.e., roof hatches, access doors, rooftop ladders, etc.) regardless of traffic frequency.
2. Walkways must also be installed if regular maintenance (once a month or more) is necessary to service rooftop equipment.

The Mule-Hide Walkway Pad is recommended for use with all the Mule-Hide Roofing Systems. The Mule-Hide Walkway Pad is UV resistant and offers excellent tear and puncture resistance.

**PHYSICAL CHARACTERISTICS:**

Color: Available in WHITE or BLACK

**Dimensional Conformance:**

Pad Thickness (not including nibs) Min - 0.162 Max - 0.202

**Performance Requirements:**

Density, pct	ASTM D 297 Unaged	70
Tensile Strength, psi Machine Direction	ASTM D 412 Unaged (Die C) 175	500
Tear Resistance, ppi Machine Direction	ASTM D 624 Unaged (Die C) 60	250

**PACKAGING & STORAGE:**

Pads: 30 inches X 30 inches - 50 per skid (76 cm X 76 cm).

**ADVANTAGES:**

- Product has excellent tear and puncture resistance and UV resistance.
- Provides a slip resistant surface.

**INSTALLATION:**

1. Remove excess dust, dirt and debris from the membrane by sweeping with a stiff bristle broom or wiping with a clean rag.
2. Thoroughly clean the membrane surface by using a Scotch Brite® Pad and ERS-EPDM/TPO Tape Primer. Use ERS-EPDM/TPO Tape Primer to clean/prime the EPDM membrane when using ERS-EPDM Splice Adhesive to adhere pads.
3. The corners of individual 30" (76 cm) square ERS-EPDM/TPO Walkpads are factory rounded.
4. Adhere ERS-EPDM/TPO Walkpads with ERS-EPDM Splice Adhesive according to the following procedure:

- a. Apply splice adhesive to the smooth side of the ERS-EPDM/TPO Walkpad and to the cleaned EPDM membrane at a minimum coverage rate of 100 square feet (9.3 sq m) per gallon (one surface). Both surfaces must have continuous coverage. One gallon of ERS-EPDM Splice Adhesive is sufficient to adhere eight individual ERS-EPDM/TPO Walkpads.
  - b. Allow the adhesive to dry until it is tacky but will not string or stick to a dry finger touch and will not move when pushed with a dry finger.
  - c. Rolling the perimeter of the ERS-EPDM/TPO Walkpad is not necessary. The ERS-EPDM/TPO Walkpad should be walked in place.
5. Adhere ERS-EPDM/TPO Walkpads with ERS-EPDM In-Seam Tape according to the following procedure:
- a. Apply ERS-EPDM/TPO Tape Primer to the smooth side of the ERS-EPDM In-Seam Tape using a paint roller or clean rag. Apply only to areas where the ERS-EPDM In-Seam Tape will be adhered.
  - b. Apply three strips of 3" ERS-EPDM In-Seam Tape or two strips of 6" ERS-EPDM In-Seam Tape to the ERS-EPDM/TPO Walkpad after primer has dried. (When using 3" In-Seam Tape; apply along the parallel edges and down the center. If using 6" ERS-EPDM In-Seam Tape apply only to the parallel edges).
  - c. Remove release liner and place the ERS-EPDM/TPO Walkpad onto the primed membrane area. The ERS-EPDM/TPO Walkpad should be walked in place once adhered.
6. Allow a 1" (25 mm) wide break between ERS-EPDM/TPO Walkpads. Discontinue walkways over field splices allowing a minimum 1" (25 mm) gap.

#### **PRECAUTIONS:**

The product is to be used as a walkway only and is not designed as a substitute for ballast. ERS-EPDM/TPO Walkpads cannot be installed within 10' (3 m) of the roof perimeter or on projects which exceed 50' (15 m) in height for ballasted systems. Concrete pavers may be used in these areas. When installing walkway pads in conjunction with ballast, avoid the entrapment of small ballast below walkway pads. Also, avoid excessive application of splice adhesive on ballasted systems installed over EPS insulation. ERS-EPDM/TPO Walkpads are a maintenance item and are not covered under the Ecology Roof Systems warranty.

#### **PROTECTION & SAFETY:**

Ecology Roof Systems maintains Material Safety Data Sheets on all of its products. Material Safety Data Sheets contain health and safety information for your development of appropriate product handling procedures to protect your employees and customers. Ecology Roof Systems' Material Safety Data Sheets should be read and understood by all of your supervisory personnel and employees before using Ecology Roof Systems products in your facilities.

## *Ecology Roof Systems*<sup>®</sup>

Corporate Offices: 9821 Olde Eight Road, Unit F, Northfield, OH 44067  
PHONE: 330-467-4220 FAX: 330-467-4225 [www.ecologyroof.com](http://www.ecologyroof.com)

**REGIONAL OFFICES LOCATED ACROSS THE U.S.**

To the best of our knowledge, all technical data contained herein is true and accurate as of the date of issuance and subject to change without prior notice. User must contact Ecology Roof Systems to verify correctness before specifying or ordering. We guarantee our products to conform to the quality control standards established by Ecology Roof Systems. We assume no responsibility for coverage, performance or injuries resulting from use. Liability, if any is limited to replacement of the product. NO OTHER WARRANTY OR GUARANTEE OF ANY KIND IS MADE BY ECOLOGY ROOF SYSTEMS, EXPRESSED OR IMPLIED, STATUTORY, BY OPERATION OF LAW, OR OTHERWISE, INCLUDING MERCHANTABILITY AND FITNESS FOR A PARTICULAR PURPOSE.